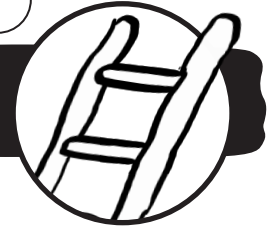


ECO SNAKES AND LADDERS



How to play

Decide who goes first or roll a dice to see who scores the highest number - that person then goes first.

Roll the dice and move your counter/small object forward.



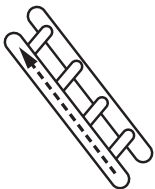
If you land on a **water droplet** you can pick up one of the eco cards and read the back. Hold on to the card.



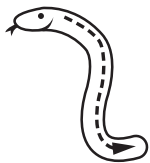
If you land on **spilt water** you must 'slip' one of your eco cards back into the pile.

The aim of the game is to see who can get the most eco cards by the time you've reached the end.

Both players must have reached the end square before you can count your eco cards to see who has won.

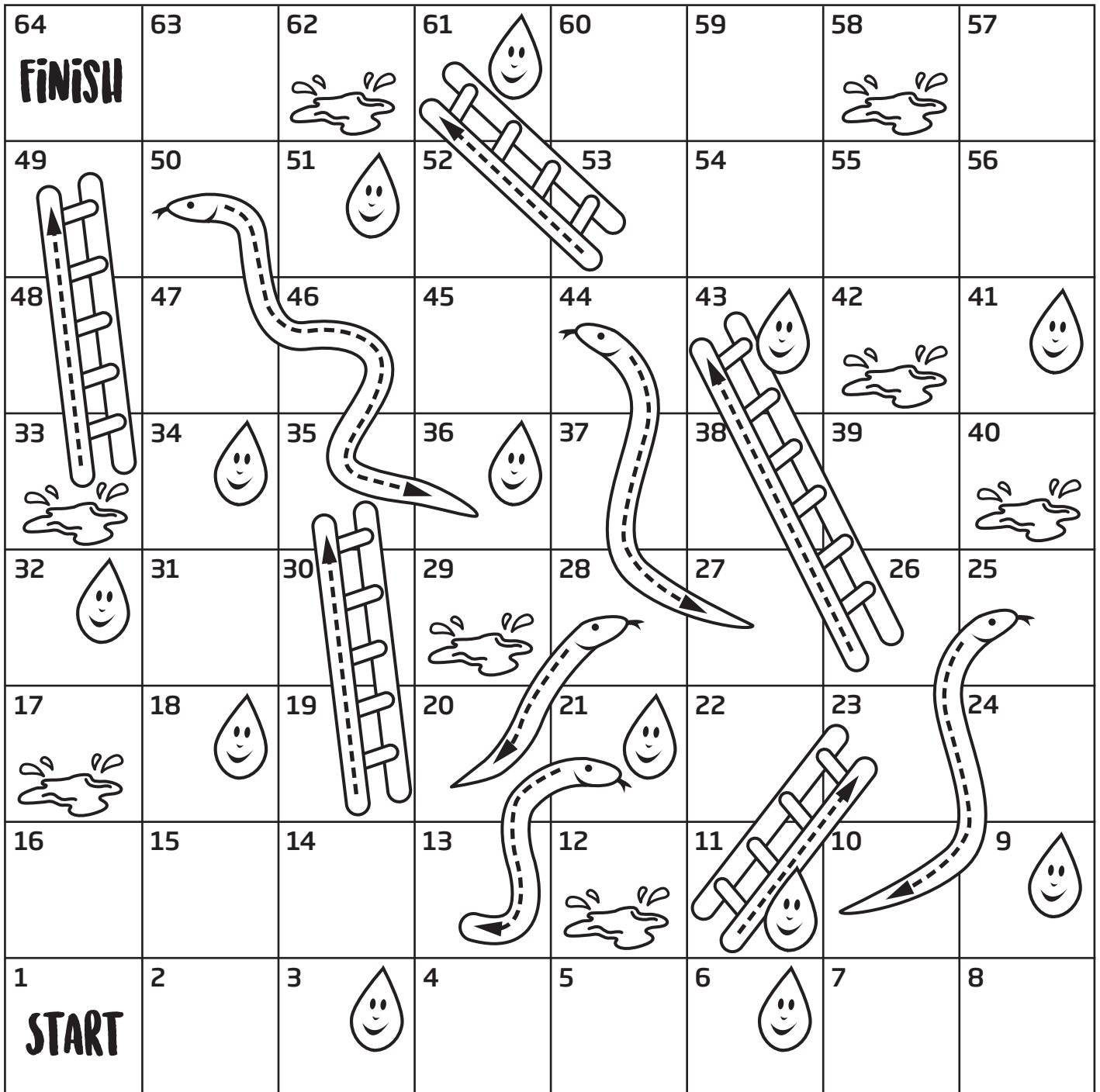


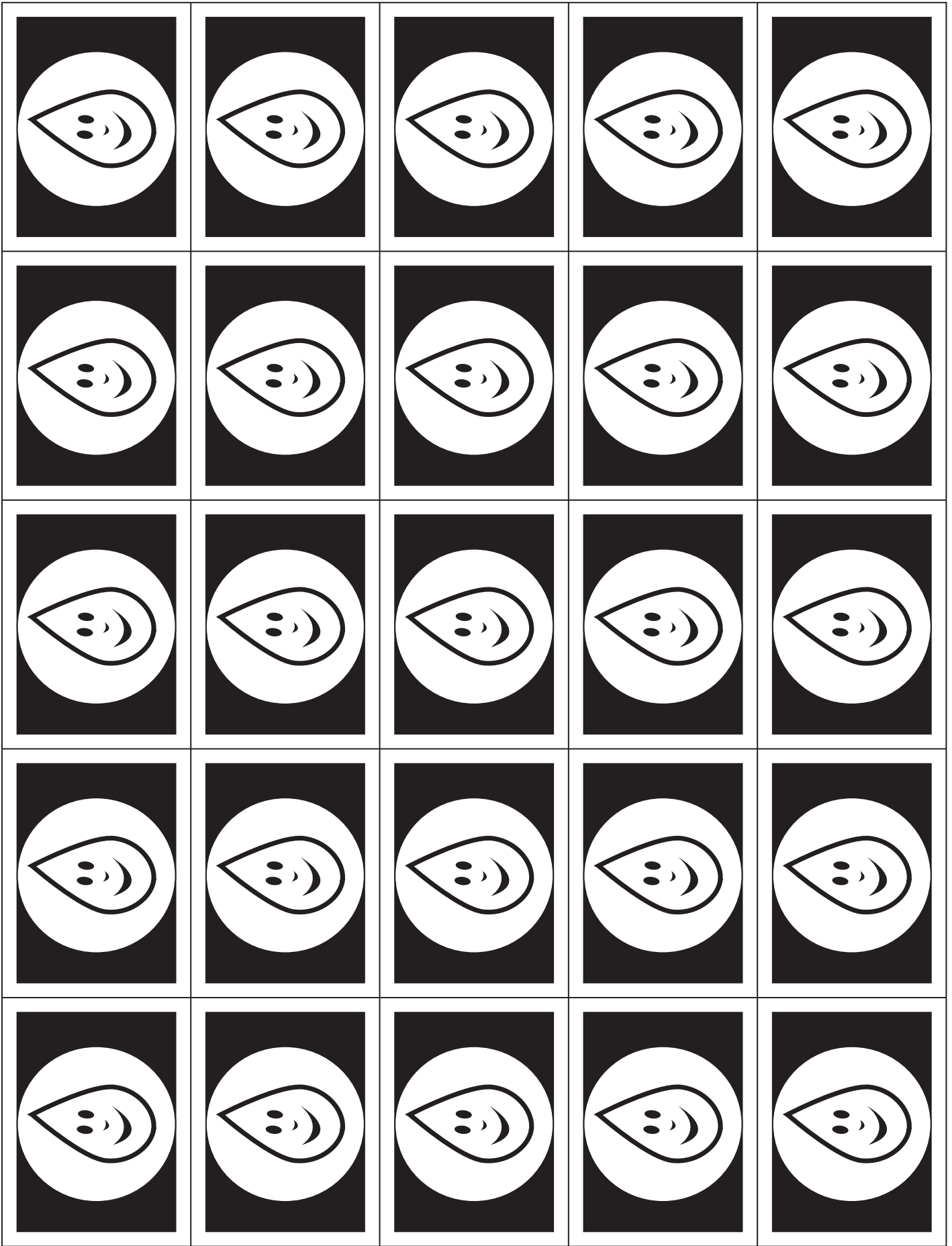
If you land on a **ladder**, climb to the top of the ladder.



If you land on a **snake** head, move down to the end of the snake's tail.







| | | | | |
|--|--|---|--|---|
| <p>You only used the amount of water that you needed when boiling the kettle.</p> <p>It wastes water and electricity if you overflow your kettle.</p> | <p>You had a shorter shower.</p> <p>You only need four minutes in the shower to get clean. Any longer and you could be using more water than having a bath.</p> | <p>You used spare water to water a plant.</p> <p>Rather than tipping an unfinished glass of water down the sink, you could water the plants instead!</p> | <p>You got a leaky tap fixed.</p> <p>A leaking tap can waste one litre of water every hour which wastes water and money.</p> | <p>You used water from a water butt.</p> <p>A water butt collects rainwater. This water is free and environmentally friendly!</p> |
| <p>You dried your clothes on a washing line.</p> <p>This is cheaper and more environmentally friendly than using a radiator or tumble dryer.</p> | <p>You turned the tap off when brushing your teeth.</p> <p>This saves twelve litres of water every time and saves money too!</p> | <p>You used a watering can to water the garden.</p> <p>This uses only nine litres of water rather than a hose which uses nine litres every minute.</p> | <p>You used a washing up bowl.</p> <p>Leaving the tap running to do the washing up uses nine litres every minute. A bowl uses only nine litres.</p> | <p>You used the eco cycle on your dishwasher.</p> <p>This uses less water and less electricity than a normal cycle.</p> |
| <p>You installed a water meter in your home.</p> <p>This can save £55 each year in comparison to an unmetered home.</p> | <p>You filled your washing machine.</p> <p>Only washing half loads wastes water and electricity. Try to fill your drum before turning on.</p> | <p>You used a bucket of water to clean your car.</p> <p>This uses only 9 litres of water rather than a hose which uses 9 litres every minute.</p> | <p>You used the eco cycle on your washing machine.</p> <p>This uses less water and less electricity than a normal cycle.</p> | <p>You drank tap water rather than bottled.</p> <p>This saves a lot of money and prevents more plastic ending up in landfill or in our oceans.</p> |
| <p>You filled your bath half-way.</p> <p>One bath uses 80 litres of water. The average person uses 150 litres of water a day!</p> | <p>You lagged your pipes.</p> <p>This can help prevent your pipes from bursting during cold weather.</p> | <p>You put lids on pans when cooking.</p> <p>This means your food cooks faster and uses less energy!</p> | <p>You put fat and oil in the bin.</p> <p>Pouring fats and oils down your drains can cause nasty blockages.</p> | <p>You lowered the flow on your shower.</p> <p>Using a lower flow shower head can save six litres of water every minute!</p> |
| <p>You put wet wipes and paper towels in the bin.</p> <p>Putting these down the toilet can cause nasty blockages.</p> | <p>You used the shorter flush on a dual flush toilet.</p> <p>This uses less water than a full flush.</p> | <p>You got a leaky loo fixed.</p> <p>Adding a special strip or dye to your loo can detect a leak. These leaks can waste 100 litres + a year!</p> | <p>You lagged your tank.</p> <p>Doing this means water gets hotter quicker and stays hotter longer, using less energy.</p> | <p>You turned the tap off when rubbing soap into your hands.</p> <p>Leaving the tap on can waste eight litres of water.</p> |

