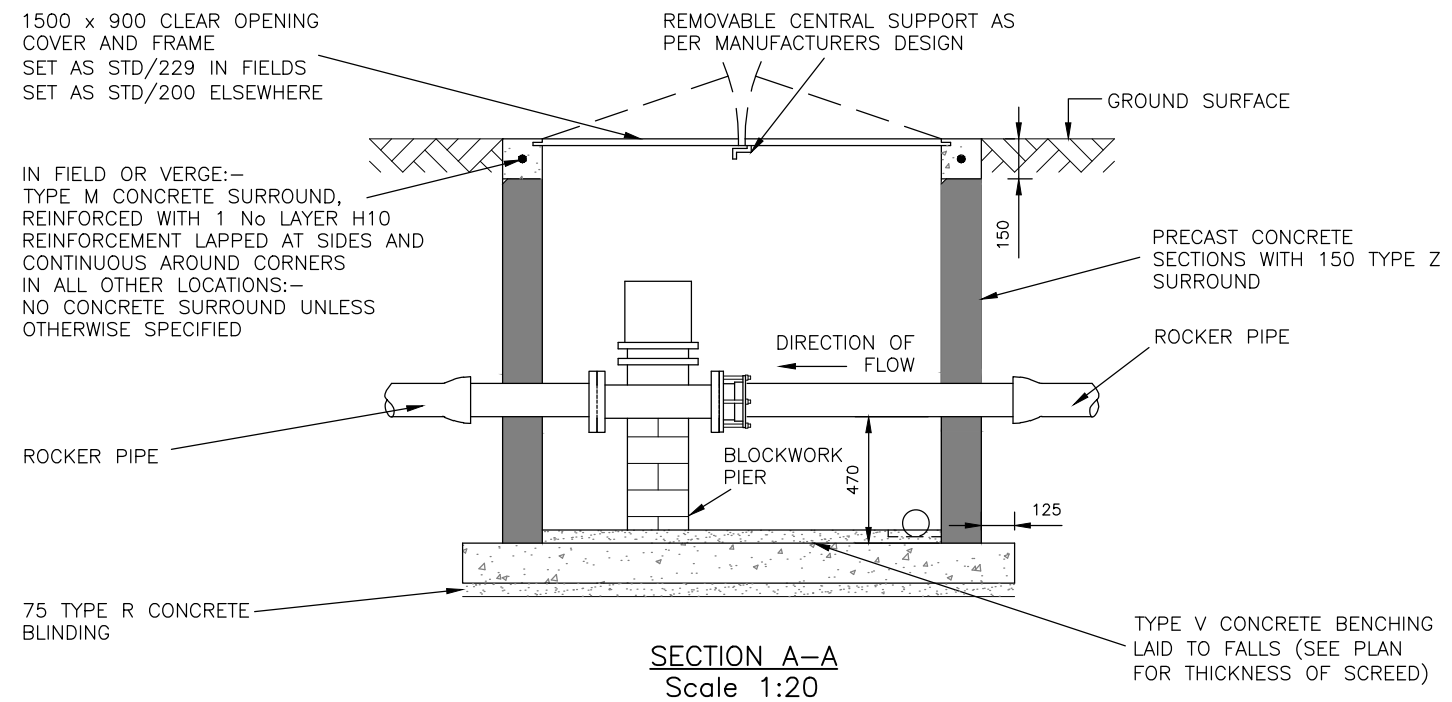
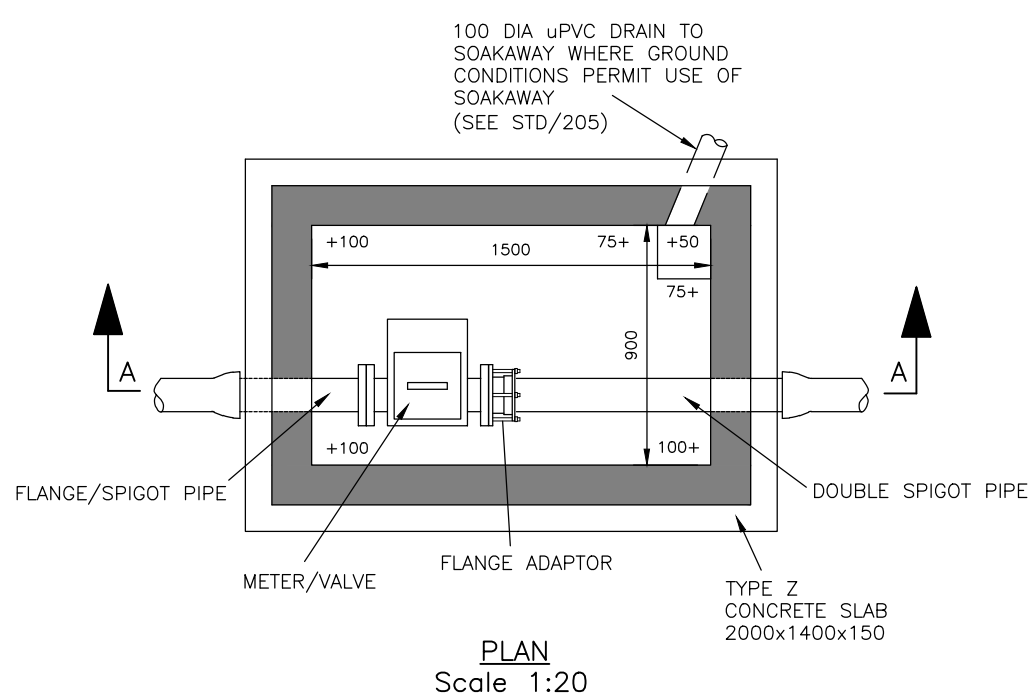


NOTES

1. THIS CHAMBER NOT TO BE USED IN HIGHWAYS
2. COVER AND FRAME:-
  - a) IN FIELD  
GALVANISED STEEL, TWIN-HINGED, LOCKING AND REMOVABLE CENTRAL SUPPORT IN ALL OTHER
  - b) IN PEDESTRIAN AREAS, VERGES ETC  
B125 CAST COVER OR GALVANIZED STEEL TO EQUIVALENT LOADING
3. MILD STEEL TO BE GALVANISED TO BS EN ISO 1461:1999
4. TYPICAL ARRANGEMENT SHOWN FOR WASTE WATER METER.
5. STEP IRONS OR ACCESS LADDER AS AGREED WITH OPERATIONS
6. MINIMUM DISTANCES BETWEEN THE FLOW CONTROL/MEASUREMENT DEVICE AND THE CLOSEST UPSTREAM AND DOWNSTREAM SOURCE OF TURBULENCE SHALL BE ENGINEERED TO MEET MANUFACTURERS REQUIREMENTS FOR OPTIMUM USE OF THE DEVICE
7. ISOLATING VALVES TO BE PROVIDED UPSTREAM AND DOWNSTREAM OF THE METER/VALVE LOCATION TO SUIT PARTICULAR NEEDS OF INSTALLATION AND SATISFY NEED TO AVOID TURBULENCE (SEE NOTE 8)
8. THIS DRAWING IS TO BE READ IN CONJUNCTION WITH CONCRETE DESIGN STANDARD 151



SITE ID

NGR

NOTES

C	COMPANY LOGO CHANGED	CAM	CAM	SWRN	17/09/2019
B	NOTES UPDATED	CAM	CAM	JB	30/08/2016
A	Initial Revision	CAM	CAM	SC	01/05/2008
MK	REVISIONS	DRN	CHK	APP	DATE

SMALL CHAMBER FOR PRESSURE REDUCING VALVE REFLUX VALVES AND METERS

**STANDARD DRAWING**

ORIGINAL DRAWING SIZE A2		
INITIALS	DATE	SCALES
DESIGNED: SC	23/04/2007	1:20
DRAWN BY: CAM	23/04/2007	

DRAWING NUMBER STD/215	REV. C
---------------------------	-----------